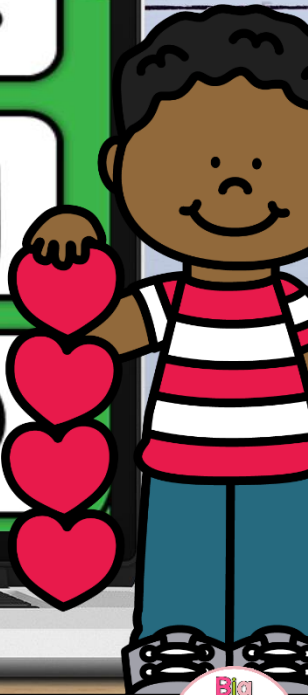
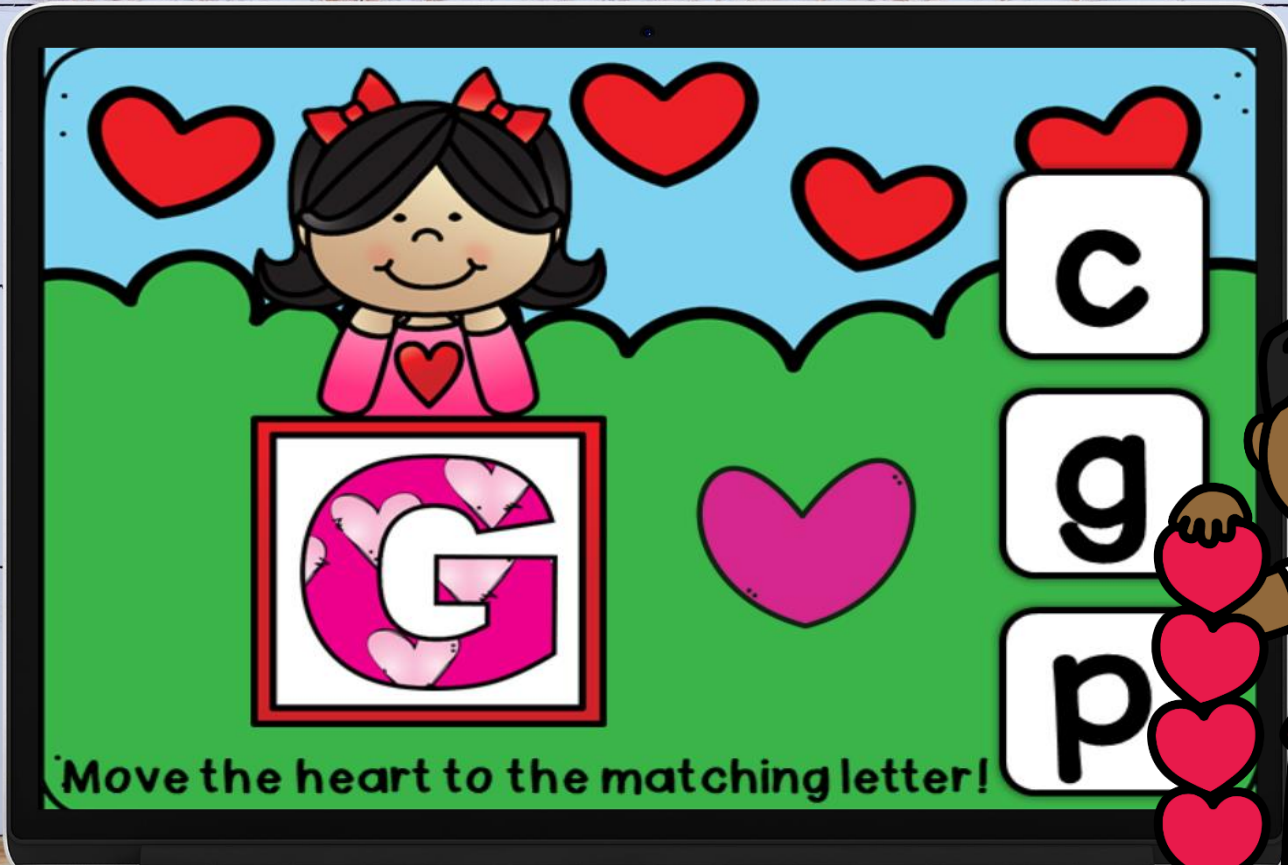


For use with

Google Classroom

Letter Matching



Valentine's



Created by: Julie Davis



Made for Google Classroom

- Google Classroom can be used in Kindergarten and 1st Grade too!
- These are great to use with younger students as they are learning Google Classroom.
- Perfect addition to your math centers!
- Fun and interactive games
- A fun way to use technology!





- You will receive 52 cards in this deck.
- On each card, look at the letter. Find and place the star on the matching letter on the side.

