

For use with  
**Google Classroom**

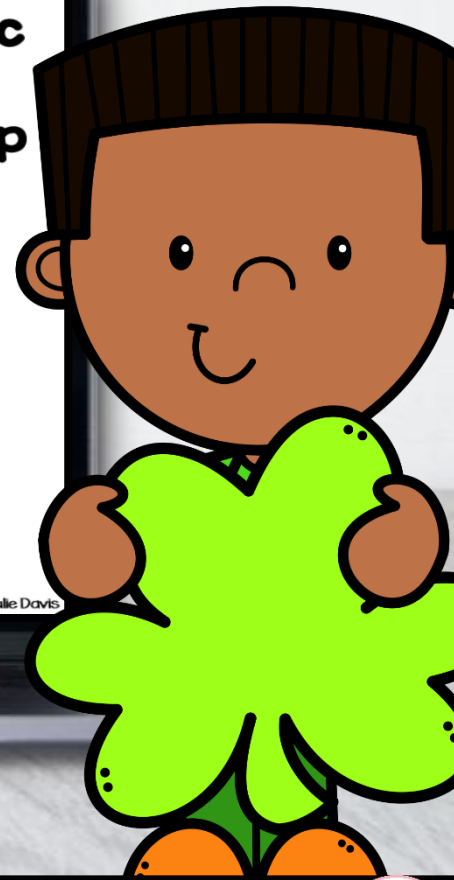
# Letter Matching

|   |   |   |   |   |   |   |   |
|---|---|---|---|---|---|---|---|
|   | p | p | ○ |   | p | p |   |
| p | ○ | c | c | p | ○ | c | p |
| p | c | c | c | c | c | c | ○ |
| p | c | ○ | c | c | p | p | p |
|   | p | c | c | ○ | p |   |   |
| p | ○ | c | p | p | p |   |   |
| p | c | c | p |   | ○ | p |   |
|   | p | p | ○ |   |   | p |   |

○ - c  
○ - p

Clover

Created by Julie Davis



# ST. PATRICK'S

Created by: Julie Davis



# Made for Google Classroom

- Google Classroom can be used in Kindergarten and 1<sup>st</sup> Grade too!
- These are great to use with younger students as they are learning Google Classroom.
- Perfect addition to your math and literacy centers!
- Fun and interactive games
- A fun way to use technology!





- You will receive 10 cards in Google Slides.
- On each card, students will look at the letters and use the snap cubes to match the letters by the color code.

